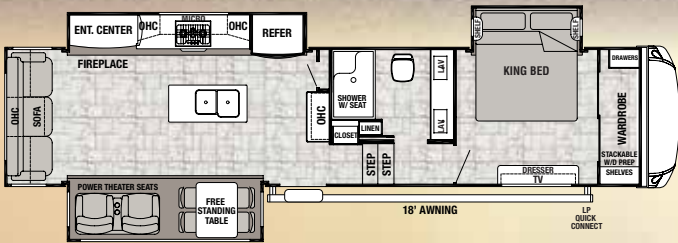
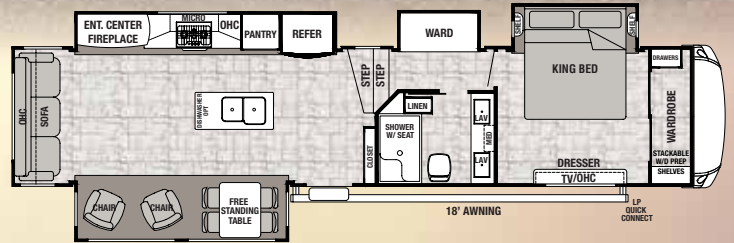


Cedar Creek

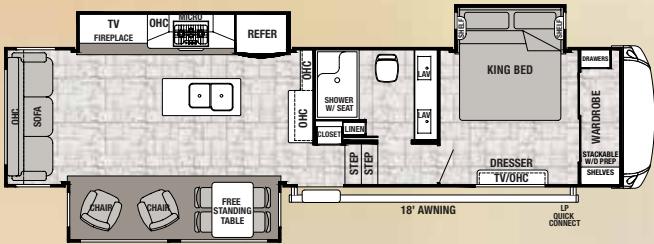
HATHAWAY EDITION



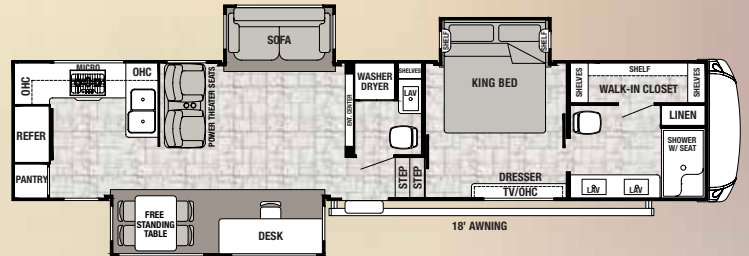
341K



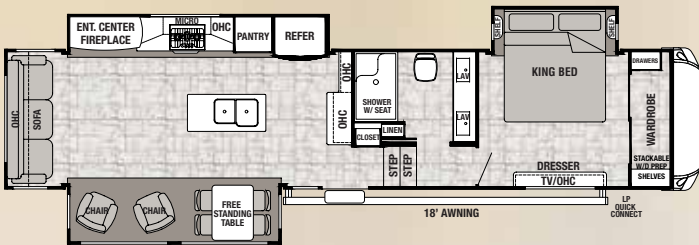
38CK2



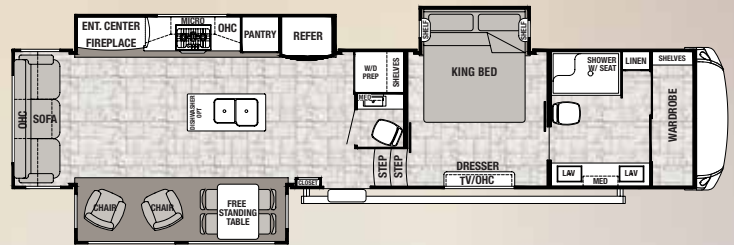
34RL2



38DBRK

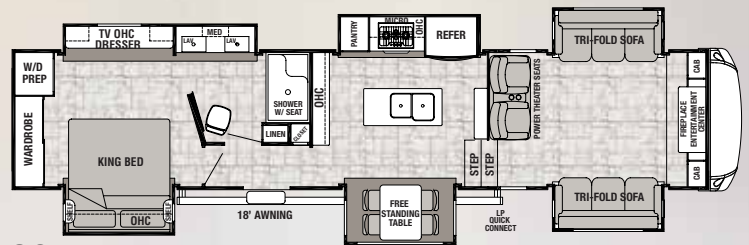


36CK2



38FBD

Your Cedar Creek Hathaway Dealer



38FLX

THE SMART CHOICE FOR THE EXPERIENCED RV'ER

CEDAR CREEK HATHAWAY FIFTH WHEELS

HATHAWAY EDITION PACKAGE

(Mandatory Features)

- Cedar Creek's famous all aluminum superstructure on 16" centers or less
- "True" pearl gelcoat exterior - truly the best of the best in gelcoat exteriors. 40% thicker and keeps it's high gloss longer than our competitors less expensive exteriors
- 100% "True" gelcoat front painted cap
- Jensen Home Theater System includes: 50" LED TV, swing arm, bracket, CD/DVD player, AM/FM stereo, and J-Control app for your smart devices. Apple licensing is also included
- 12V sound bar with 2 mid-tone speakers, 2 tweeters, 2 woofers and 2 outside speakers
- High sheen, European Beech cabinet doors with hidden hinges
- 36" Fireplace with remote and thermostat
- MORryde® 5 tier, "Step Above" entry steps with easy lifting mount, extra wide, 32" friction hinge, entry door
- LED Edison lighting fixtures with lighted tin medallion
- 88" Franklin® deluxe davenport and La-Z-Boy® recliners with lifetime warranty on parts. (N/A 38FLX, 38DBRK)
- Full pantry in the kitchen area with full extension drawers and 110V outlet (N/A 34RL2, 34IK)
- Insignia 18 cu. ft. stainless steel, electric refrigerator with dedicated inverter
- Furrion® Chef's Collection with gas cooktop and oven
- USB ports in kitchen and bedroom
- New panoramic window in kitchen area
- Solid surface counter-tops with oversized 60/40 stainless steel sinks
- Self-closing drawer guides with silverware organizer
- Full residential pantry with full extension drawers (N/A 34RL2)
- Jack and Jill sinks with full wall, backlit mirror (N/A 38FLX)
- Denver® king 8" mattress
- Congoleum® Carefree™ designer flooring, throughout (Dining slides will have Shaw® carpet)
- One-piece ceramic backsplash
- New IN-Command control system with smart phone remote app
- On Demand hot water heater
- Day shades and night black out shades
- InterVac central vacuum system with automatic dust pan and new vac port
- Heated front storage compartment with diamond tread flooring
- Quick Disconnect LP gas line

Exterior Features

- DEXTER® Safety and Performance Package
 - Nev-R-Adjust® brakes are always properly adjusted for improved stopping power in half the distance
 - E-Z Flex™ rubber equalization system with 1/2" link plates and (8) grease zerks per side
 - E-Z Lube®, heavy duty axles with bronze bushings in shackles
- 16" 8-lug, ST, "G" rated tires on 7,000 lb. Dexter® axles, LT "H" rated tires on 8,000 lb. Dexter® Axles
- Prepped for wireless observation system
- 100% automotive frameless windows with tinted safety glass - all windows open!
- Satellite pre-wire from docking station to both the living room and the bedroom
- Thicker 1-1/4" compartment doors with slam door latches and dedicated key lock
- Electric awning with LED night strip
- 50 Amp service
- Solid state 55 Amp power converter
- Central docking station
- Ducted 15,000 BTU Duo-Therm™ "HP" (High performance) air conditioner with larger compressor, circular motion, 8" ductwork and cold air returns. Larger compressor forces 30% more air into the coach - the most powerful air conditioner in RVs today.
- Braced and wired for second air conditioner
- Ladder
- Radius wrapped bottom metal skirt to the frame
- New door side cold water port

Living Room

- New decorative ceiling panels with flat roof design
- Ceiling fan
- Sculpted solid hardwood slide room fascia in living room

Kitchen Features

- Redesigned island with LED back lighting
- Create-A-Breeze Fantastic fan with thermostat and rain sensor
- Stainless steel 30" over the range microwave vented to the outside
- Large crown and cove molding throughout
- Free-standing table with hidden table leaf extension, (2) standard chairs and (2) folding chairs

Miscellaneous Features

- 12V battery disconnect
- Dometic comfort control center with dual zone control for heating and cooling
- Washer/dryer prep
- LP gas/carbon monoxide detector

- Smoke detector
- Suburban 40,000 BTU furnaces
- One year of Coach Net roadside assistance
- Membership to the Forest River Owner's Group (F.R.O.G.)

Bedroom Features

- Bedroom package redesign
- 32" LED Jensen television
- Ceiling mounted overhead reading lights with individual switches
- Extra wide mirrored closet doors
- Walk-in closet

OPTIONS

- Level-Up hydraulic 6-point leveling system
- Second 15,000 BTU ducted "Whisper Quiet" Penguin air conditioner
- Third 15,000 BTU ducted "Whisper Quiet" Penguin air conditioner with power management system
- Norcold 18 Cu. ft. stainless steel gas/electric refrigerator
- 20 Cu. ft. stainless steel electric refrigerator with pull-out lower freezer compartment, inverter and ice maker (N/A 34RL2)
- 30" Stainless steel convection oven/microwave
- Fisher and Paykel dishwasher (N/A 34RL2, 38FLX)
- Upgraded Champagne Dreamer mattress, 10" Thick
- Awning toppers
- 12" Electric slide room awning (N/A 38FLX)
- 1-1/4" Bike rack receiver hitch
- Create-A-Breeze Fantastic fans with thermostat and rain sensor in the bedroom area
- Matching Chottoman with interior storage (Chair or ottoman - you decide)
- Full body paint - Classic, Midnight Mist, Kristal
- Heat pump on main air conditioner
- Power theater seating IPO recliners (Std. 38DBRK, 38FLX)
- LP generator prep
- Onan 5.5 kw Marquis Gold LP generator
- Cadet self-regulating bedroom wall heater (N/A 38FLX)
- Splendide® combination washer/dryer
- Splendide® stackable washer/dryer
- Wireless rear observation camera
- Dual pane windows
- Trail Air™ air ride hitch coupler
- 50 Amp cord reel
- Solar prep
- 200W Solar panels
- 12 Gal. gas/electric water heater
- Shaw® carpet with rebond carpet pad in living room
- Shaw® carpet with rebond carpet pad in bedroom

MODEL	34IK	34RL2	36CK2	38CK2	38DBRK	38FBD	38FLX
GVWR	16113 lb.	16270 lb.	16525 lb.	18000 lb.	18000 lb.	18000 lb.	18000 lb.
Hitch Weight	2113 lb.	2270 lb.	2525 lb.	2455 lb.	2456 lb.	2295 lb.	2756 lb.
UVW	11261 lb.	12009 lb.	13075 lb.	13095 lb.	13170 lb.	13765 lb.	14510 lb.
CCC	4852 lb.	4733 lb.	3391 lb.	4391 lb.	4835 lb.	4176 lb.	3431 lb.
Exterior Length	37' 6"	37' 11"	40' 7"	41' 6"	42'	41' 8"	41' 11"
Exterior Height	13' 5"	13' 5"	13' 5"	13' 5"	13' 5"	13' 5"	13' 5"
Exterior Width	96"	96"	96"	96"	96"	96"	96"
Fresh Water*	57 gal.	57 gal.	57 gal.	57 gal.	57 gal.	57 gal.	57 gal.
Gray Water	80 gal.	80 gal.	80 gal.	80 gal.	80 gal.	80 gal.	80 gal.
Black Water	40 gal.	40 gal.	40 gal.	40 gal.	40 gal.	80 gal.	40 gal.
Awning Size	18 ft.	16 ft.	18 ft.	18 ft.	18 ft.	18 ft.	21 ft.

*On-Demand, Tankless Water Heater

GVWR (Gross Vehicle Weight Rating) - is the maximum permissible weight of the unit when fully loaded. It includes all weights, inclusive of all fluids, cargo, optional equipment and accessories. For safety and product performance do NOT exceed the GVWR.

GAWR (Gross Axle Weight Rating) - is the maximum permissible weight, including cargo, fluids, optional equipment and accessories that can be safely supported by a combination of all axles.

UVW (Unloaded Vehicle Weight)* - is the typical weight of the unit as manufactured at the factory. It includes all weight at the unit's axle(s) and tongue or pin and LP Gas. The UVW does not include cargo, fresh potable water, additional optional equipment or dealer installed accessories.

*Estimated Average based on standard build optional equipment.

CCC (Cargo Carrying Capacity)** - is the amount of weight available for fresh potable water, cargo, additional optional equipment and accessories. CCC is equal to GVWR minus UVW. Available CCC should accommodate fresh potable water (8.3 lbs per gallon). Before filling the fresh water tank, empty the black and gray tanks to provide for more cargo capacity.

**Estimated average based on standard build optional equipment

Each Forest River RV is weighed at the manufacturing facility prior to shipping. A label identifying the unloaded vehicle weight of the actual unit and the cargo carrying capacity is applied to every Forest River RV prior to leaving our facilities. The load capacity of your unit is designated by weight, not by volume, so you cannot necessarily use all available space when loading your unit.

Cedar Creek
HATHAWAY EDITION

The Smart Choice for the Experienced RV'er

FOREST RIVER INC. CEDAR CREEK DIVISION

501 Hawpatch Road ■ Topeka, IN 46571

Phone: 260-593-2404

Parts & Service Phone: 260-593-4000

On The Web at: www.forestriverinc.com/hathaway



Learn More
Scan this barcode using
a QR Reader on your
smart phone to learn
more about Forest River.



All information contained in this brochure is believed to be accurate at the time of publication. However, during the model year, it may be necessary to make revisions and Forest River, Inc., reserves the right to make all such changes without notice, including prices, colors, materials, equipment and specifications as well as the addition of new models and the discontinuance of models shown in this brochure. Therefore, please consult with your Forest River dealer and confirm the existence of any materials, design or specifications that are material to your purchase decision. ©2018 Cedar Creek. A division of Forest River, Inc., a Berkshire Hathaway Company. 9/18 Hathaway

Find us on
Facebook